

Washer-Extractors

Cabinet Freestanding

Preventative Maintenance

Original Instructions

Keep These Instructions for Future Reference.

(If this machine changes ownership, this manual must accompany machine.)



www.alliancelaundry.com

Part No. D2250EN
March 2017

Table of Contents

Introduction..... 4
 Replacement Parts..... 4
 Customer Service.....4

Maintenance.....5
 Daily..... 5
 Beginning of Day.....5
 End of Day..... 7
 Quarterly..... 8
 Every 6 Months..... 10

Introduction

Replacement Parts

If literature or replacement parts are required, contact the source from which the machine was purchased or contact Alliance Laundry Systems at +1(920)748-3950 for the name and address of the nearest authorized parts distributor.

Customer Service

For technical assistance, contact your local distributor or contact:

Alliance Laundry Systems

Shepard Street

P.O. Box 990

Ripon, Wisconsin 54971-0990

U.S.A.

www.alliancelaundry.com

Phone: +1(920)748-3121

Ripon, Wisconsin

Maintenance

Daily

IMPORTANT: Replace all panels that are removed to perform service and maintenance procedures. Do not operate the machine with missing guards or with broken or missing parts. Do not bypass any safety devices.



Figure 1



WARNING

Do not spray the machine with water. Short circuiting and serious damage may result.

W782

IMPORTANT: Door lock should be checked daily to ensure proper operation. Also check that all safety and instruction stickers are on the machine. Any missing or illegible safety instructions stickers should be replaced immediately.

Beginning of Day

1. Check door interlock before starting operation:
 - a. Attempt to start the machine with the door open. The machine should not start.



Figure 2

- b. Close the door without locking it and start the machine. The machine should not start.



Figure 3

- c. Attempt to open the door while the cycle is in progress. The door should not open. If the door lock and interlock are not functioning properly, disconnect power and call a service technician.



Figure 4

Maintenance

2. Check the machine for leaks.
 - a. Start an unloaded cycle to fill the machine.



Figure 5

- b. Verify that door and door gasket do not leak.



Figure 6

- c. Verify that the drain valve is operating and that the drain system is free from obstruction. If water does not leak out during the first wash segment, the drain valve is closed and functioning properly.



Figure 7

3. Inspect water inlet valve hose connections on the back of the machine for leaks.



Figure 8

4. Inspect steam hose connections for leaks (if applicable).



Figure 9



WARNING

To reduce the risk of electrical shock, serious injury or death, disconnect the electrical power to washer-extractor before examining the wiring.

W636



Figure 10

5. On machines equipped with an automatic Chemical Supply System, check all the hoses and hose connections for leaks or visible signs of deterioration. Replace immediately if either are present. Chemical leaks can cause damage to the machine's components.



Figure 11

6. Verify that insulation is intact on all external wires and that all connections are secure. If bare wire is evident, call a service technician.

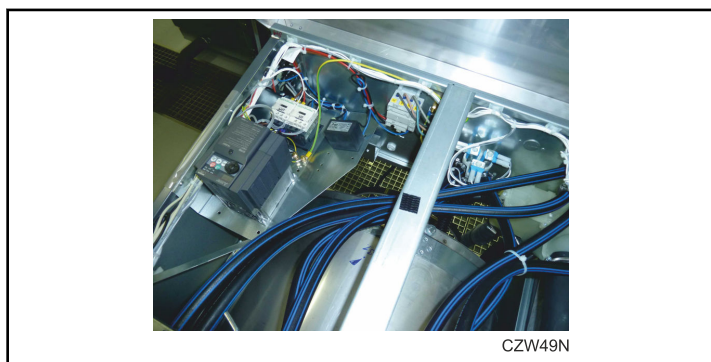


Figure 12

7. Ensure all panels and guards are properly installed.



Figure 13

End of Day

1. Inspect and clean the basket and door gasket of residual detergent and all foreign matter.



Figure 14

2. Clean the door glass and between the door gasket and the door with a damp cloth.



Figure 15

3. Clean supply dispenser lid and general area with mild detergent. Flush the dispenser with clean water.



Figure 16

4. Clean the machine's top, front and side panels with all-purpose cleaner. Rinse with clean water and dry.

IMPORTANT: Use only isopropyl alcohol to clean graphic overlays. Never use ammonia-based, vinegar-based or acetone-based cleaners on graphic overlays.

NOTE: Unload the machine promptly after each completed cycle to prevent moisture buildup. Leave loading door and dispenser lid open at the end of each completed cycle to allow moisture to evaporate.



Figure 17

5. Leave the loading door open at the end of each day to allow moisture to evaporate.



Figure 18

6. Shut off water supply.



Figure 19

Quarterly

NOTE: Disconnect power to the machine at its source before performing the quarterly maintenance procedures.



Figure 20

1. Check the bearing house for leakage.

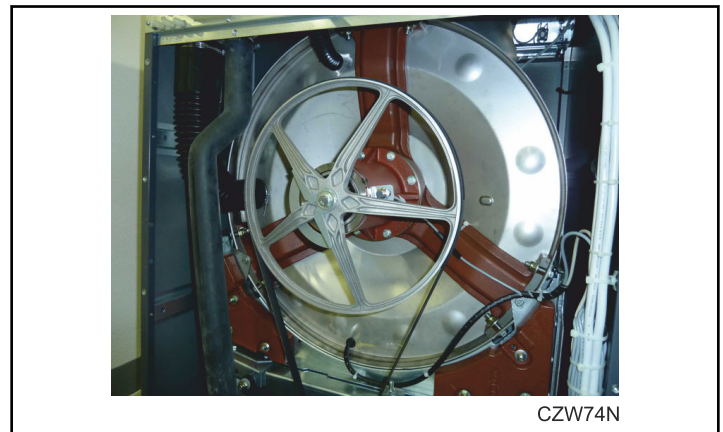


Figure 21

2. Verify that the drain valve is operating and that the drain system is free from obstruction. If water does not leak out during the first wash segment, the drain valve is closed and functioning properly.



Figure 22

3. Visually check all hoses and connections inside machine for leaks.

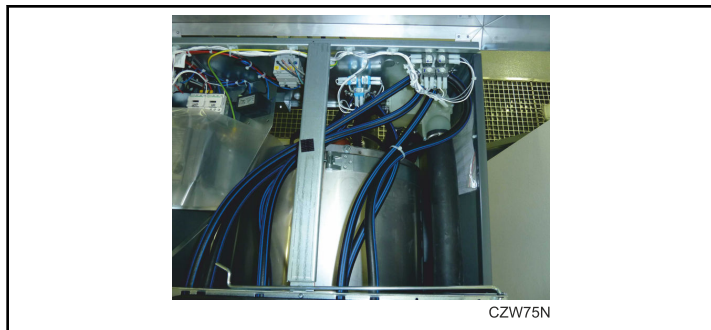


Figure 23

4. Make sure that control components are protected against moisture and dust during the clean up. Wipe and clean the machine inside.

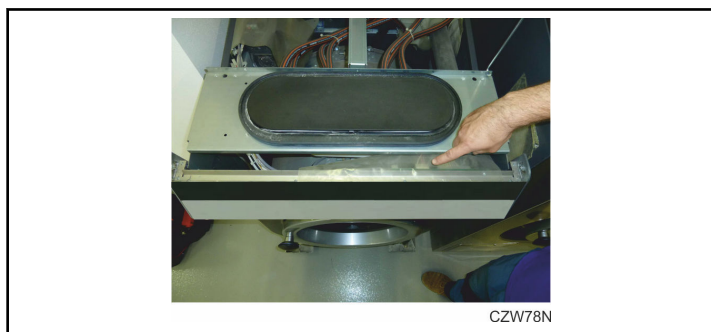


Figure 24

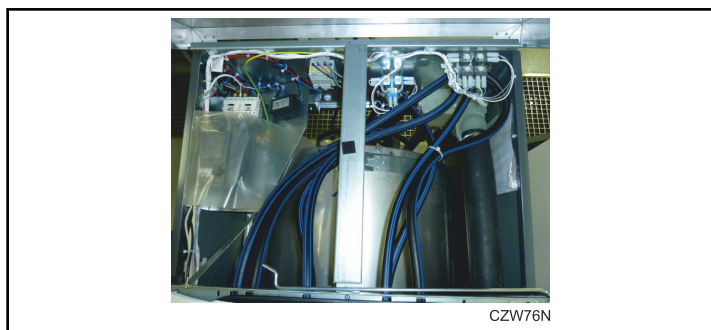


Figure 25

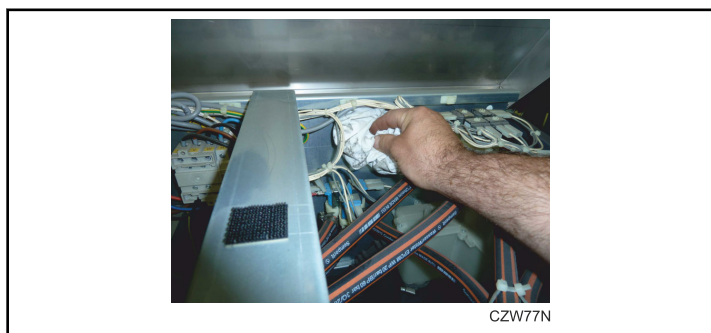


Figure 26

5. For models with electric heat, check the tightening of the contacts of heating elements terminals and other power terminals (main switch, fuse disconnectors, contactors).

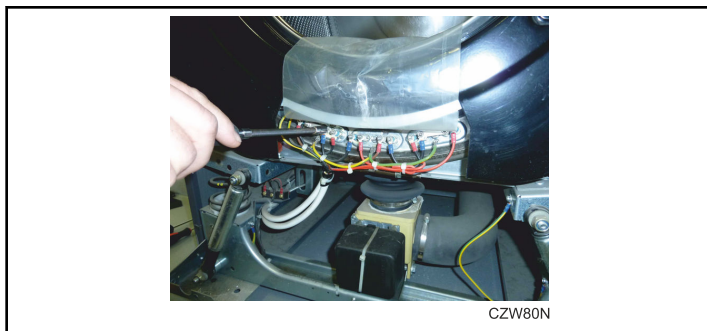


Figure 27

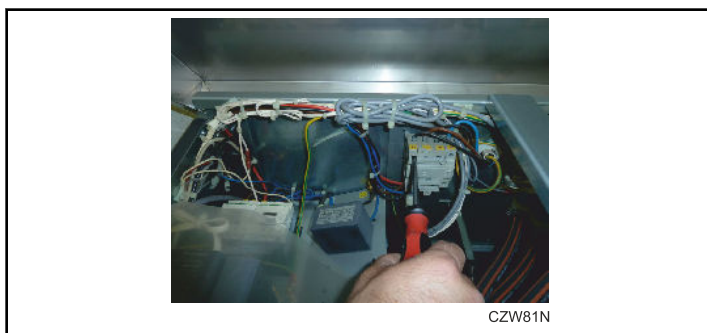


Figure 28

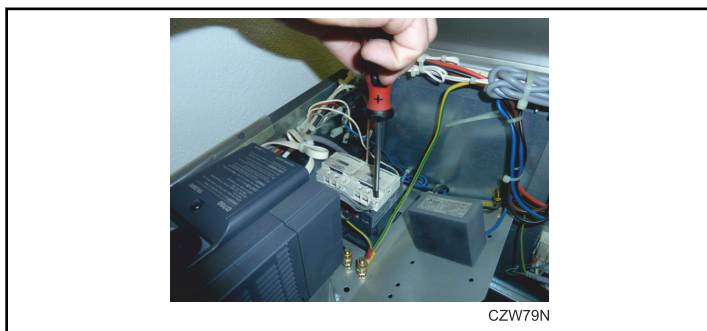


Figure 29

6. In order to increase the service life of the door gasket, apply a glycerine-based impregnating agent.



Figure 30

Every 6 Months

NOTE: Disconnect power to the machine at its source before performing maintenance procedures.



Figure 31

1. Clean the water valve filters.

	<h3>WARNING</h3>
<p>Before you start cleaning the water filters, make sure all water inlets to machine are closed.</p>	
<p>W907</p>	

- a. Turn off the water supply.



Figure 32

- b. Unscrew the hoses at the back of machine.



Figure 33

- c. Take out filter at center with pointed pliers.



Figure 34

- d. Clean the filter and re-insert.



Figure 35

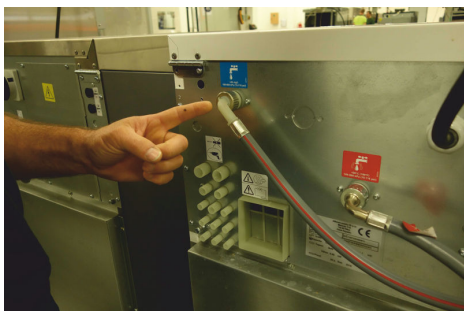
- e. When reattaching the hoses, make sure the seals are seated correctly.



CZW60N

Figure 36

- f. Check water inlets for leaks.



CZW45N

Figure 37

- g. Tighten the connections or replace the seals of inlet hose if necessary.
2. If machine is fitted with a drain pump, make sure the pump provides normal flow rate during draining. The drain pump can be cleaned when it becomes clogged with foreign objects.
 - a. Drain all water from machine.
 - b. Disconnect machine from power supply.



CZW63N

Figure 38



CZW62N

Figure 39



CZW61N

Figure 40

- c. Remove the front panel of cabinet by unlocking bolts.
 - d. Slightly turn the pump lid until water starts flowing out, making sure to catch the water.
 - e. Unscrew the lid and remove any foreign objects.
 - f. Reattach pump lid and front panel of cabinet.
3. Remove dust or dirt and verify functionality of the following:
 - a. Inverter cooling fin.



CZW64N

Figure 41

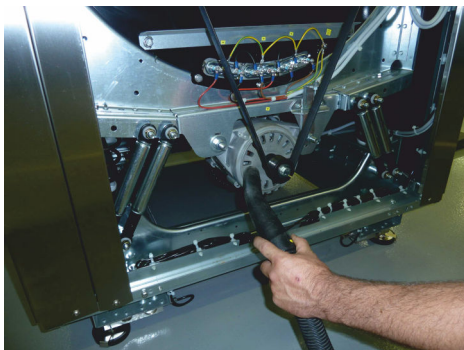


WARNING

Before removing top or back panel of machine, switch power off and wait for at least 10 minutes. Before starting inspection of frequency inverter, check for residual voltage across main circuit terminals. This voltage must be below 30 VDC before you can access the inverter for inspection.

W905

- b. Motor cooling fins.



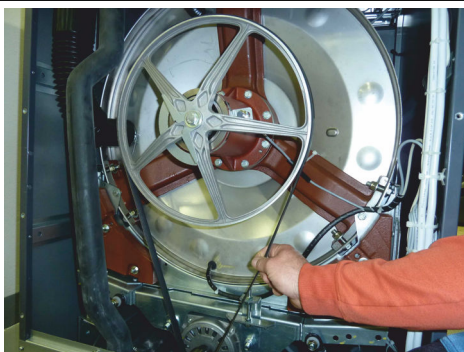
CZW65N

Figure 42

- c. Interior inverter ventilator (if present)
d. Exterior inverter ventilator (if present)

IMPORTANT: All torque joints must remain dry (non-lubricated).

4. Check for belts for wear and inspect tightness.



CZW66N

Figure 43

5. Check the tightness of bolts.

- a. Door handle central bolt – DO NOT TIGHTEN THE DOOR HANDLE CENTRAL BOLT.

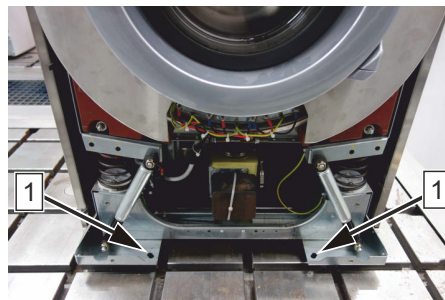


WARNING

Never interfere with the setting of the door handle. Never try to modify the setting or repair the handle! Any interference with its setting may lead to serious risk for the operator! A damaged or incorrectly functioning door handle must always be immediately replaced with a new original part.

C014

- b. Holes for Anchoring bolt.

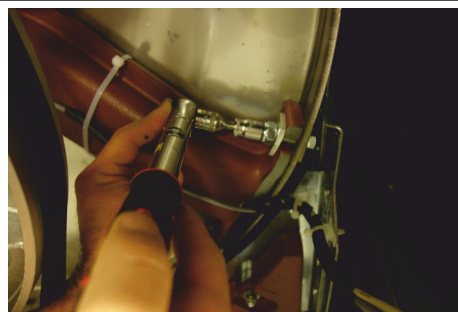


CZW84N

1. Holes for Anchoring bolt

Figure 44

- c. External tub bolts.



CZW71N

Figure 45

- d. Motor bolts.



CZW72N

Figure 46

6. Adjust the safety switch.

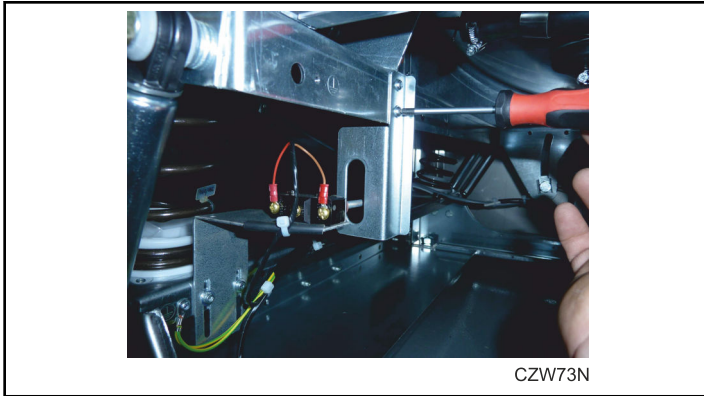


Figure 47